

LOCALITY: CALDES

From the locality of Centre di Caldes, walk down the initially uphill forest road following the indications for Plaza. After the third bend in the road, take the path on the right side of the road. Follow the indications of the Valley Path no. 11 until you reach the "Mas del Goto" (mountain shelter). From there you can walk back to Centre by going downhill on the left-hand side. The path continues on the right until it reaches the dirt road which goes to the locality of Calvezzana di Cavazzana. Walk through the town, then go downhill until you reach the bicycle and pedestrian path, which will take you back to the locality of Centre di Caldes.

CALDES CAVIZZANA

Valley Path no. 11

1 hour 30 minutes

Places of interest: "Le Centre" Multipurpose Centre



LOCALITY: TERZOLAS

From the town of Terzolas, near the Torracca Palace, proceed towards Samoclevo. Walk past the Piazza della Chiesa and Via dei Canopi following the indications of the Valley Path no. 7. Once you have reached the hamlet of Samoclevo, walk past the fountain behind the church, and then take the uphill road on the left. Take the left road again at the first fork. Here you can walk along this easy and sunny dirt road heading towards Terzolas, and then proceed to the hamlet of Arago. The route continues downhill to the hamlet of Magras, which you should cross to go back to your starting point.

TERZOLAS CALDES

Valley Path no. 7

2 hours

Places of interest: Torracca Palace



LOCALITY: MALÉ

From Malé, near the typical stone arch placed right outside this town in the direction of the city of Trento, you can walk uphill on the Provincial Road no. 141 towards Bolentina and Montes until you reach the first turn. Take a dirt road on the right and follow it for about 100 metres. Go left, following a slightly uphill road, and walk along the wide flat road which enters into Val di Rabbi, until you reach the hamlet of the locality called Birreria (brewery) with the bridge on the Rabbies stream. Walk over the bridge on the Rabbies stream and proceed to the right for 50 metres. Cross the provincial road and take the path on the left, which will take you to the Ruatti Mill in just a few minutes. To go back, follow the path towards Magras, and from here reach the locality of Fondasio and then proceed to Malé.

BIRRERIA & LA LEC

Valley Path no. 6

2 hours

Places of interest: Ruatti Mill Marinelli Smithy Museum of the Val di Sole Civilisation



LOCALITY: MALÉ

From the centre of Malé you should walk along Via Monte Grappa until you reach the SAT 119 path. Turn left and follow the Valley Path no. 8 which will take you to the hamlet of Croviana. Walk through the hamlet and cross the overpass which will take you to the bicycle and pedestrian path (from here you can reach the MMape Bee Museum in just a few minutes). Walk along this path towards Malé until you reach the locality of Molini. The centre of this hamlet can be reached by a tiny dirt road which goes uphill on the right near the underpass of the main road.

MALÉ CROVIANA

Valley Path no. 8

1 hour 30 minutes

Places of interest: Venetian Sawmill MMAPE Bee Museum



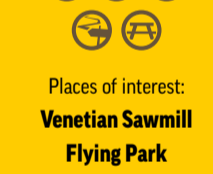
LOCALITY: MALÉ

The Sentiero dei Pianeti (the Planets' Path), which is dedicated to the astronomer Samanthia Cristoforetti, who was born in Malé, is a path which will allow you to ideally travel through space and time in the Solar System. From Piazza del Municipio in Malé (the Sun), go downhill to the locality of Molini until you reach the Venetian Sawmill, and then enter a natural environment, which extends to the wood in the locality of Regazzini (Flying Park). Cross the Noce River on the Passerella Bridge, and proceed slightly uphill, going through the "Funghetto" pine forest, until you reach the Acquazenter (Piuta).

SENTIERO DEI PIANETI PLANETS' PATH

1 hour 30 minutes

Places of interest: Venetian Sawmill Flying Park



LOCALITY: MALÉ

Start from the centre of Malé, walk through the "Funghetto" pine forest and cross the walkway bridge on the Noce River. You will then reach the locality of Regazzini. Go uphill and take the Valley Path no. 9, which will take you through the woods, alternating parts of dirt road and parts of path, up to the recreation area called Piazza di Covana. Follow the tarmacked road downhill and you will find yourselves in a natural area of utmost beauty (the protected area called "Ontaneta di Croviana"). Along this path, you will find an "old mill" (water museum, MMape) and nearby you will also find a sports area with leisure services and a picnic area near a small lake. Cross the bridge on the left, and then take the bicycle and pedestrian path on the right. This will take you to the locality of Molini di Malé. The centre of this hamlet can be reached by a dirt road which goes uphill on the right after the underpass to the main road. This loop itinerary can be walked in both directions.

CROVIANA and the MMAPE

Valley Path no. 9

2 hours

Places of interest: MMAPE Bee Museum



LOCALITY: DIMARO FOLGARIDA

This itinerary is located within the hamlets of Monclassico and Presson. The Cultural Association Le Meridiane coordinates an ambitious project, which was designed with the aim of rediscovering and increasing the appreciation for the culture of this territory. Since 2002, several artists known on a local, national and international level, with the cooperation of geomorphologists, have created over 50 sundials which are located in various places throughout these towns. This high prestige outdoor art gallery was thus created, and it can be freely visited. It encompasses more than 50 sundials, including some particular elements, such as the horizontal sundial and the dark chamber.

MONCLASSICO and PRESSON

Towns of the Sundials

1 hour 30 minutes

Places of interest: Sundials Biolake



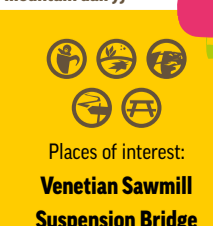
LOCALITY: VAL DI RABBI

From the car park in Piano, in the locality of Rabbi Ponti (2,252 m), proceed towards this composite in the right. Walk take the "Sentiero dell'Acqua" (Water Path). Reach the wooden bridge and proceed towards the Ragaio Waterfalls crossing the green fields, until you reach the forest road. If you have a stroller, you should stop here. Otherwise, you can proceed to the Malga Fratte. Proceed along the curvy but extremely pleasant path which goes uphill towards a panoramic viewpoint with a view on the spectacular Ragaio Waterfalls and the suspension bridge which crosses them. Cross the bridge and proceed on the path until you reach a walkway from which you can either go uphill on the left towards the Malga Fratte or downhill towards the Venetian Sawmill and back to your starting point.

SUSPENSION BRIDGE MALGA FRATTE

2 hours 30 minutes

Places of interest: Venetian Sawmill Suspension Bridge



LOCALITY: VAL DI RABBI

From the car park in front of the information office in San Bernardo (1,098 m.), follow the indications for the Kneipp path (admission with fee) where the cultural path "Rio Valorz Path" starts. It is a loop path of about 2 km where you can meet the animals of the woods, as designed by a local artist. One hour and a half. Halfway through the path, you can take a detour and reach the basis of the spectacular Valorz Waterfalls. With a wheelchair, you can walk on the Kneipp Path to the Valorz Waterfalls on the forest road.

KNEIPP PATH VALORZ WATERFALLS

2 hours 30 minutes

Places of interest: Kneipp Path Waterfalls Rio Valorz Path



LOCALITY: VAL DI RABBI

From the car park in the locality of Toler (1,380 m.), which is located about 3 km after the hamlet of Piazzola, by foot, or with a shuttle bus in the summer, you can reach the Malga Stablasolo (1,539 m.). Proceed along the forest road, pass the bridge on the Rabbies stream, and you will reach the first waterfall. Follow the path uphill to reach the renowned bridge in front of the second waterfall, which is absolutely spectacular (panoramic viewpoint at 1,750 m.). Proceed until you reach the connection with the SAT path no. 106. From here, go downhill to the Malga Stabliet (visitors centre of the Selvio National Park dedicated to groundhogs) and then go back to the Malga Stablasolo along the forest road.

SAËNT WATERFALLS

1 hour 30 minutes

Places of interest: Saint Waterfalls Stabliet Visitors Centre



LOCALITY: DIMARO FOLGARIDA

The walk starts at the ancient Venetian Sawmill, which is located at the borders of the town of Dimaro along the road to Madonna di Camiglio. After a short while along this path, there is an underpass to cross the main road. After that, take the dirt road which runs along the Meledrio stream. Here you will first walk in front of an ancient smithy and then you will pass an old lime kiln until you reach the starting point, which is the hydroelectric power plant of the municipality of Dimaro Folgarida. Go back following the same path along the magnificent Val Meledrio valley (as an alternative, you can proceed uphill to reach Folgarida, in 1 hour and a half).

VENETIAN SAWMILL VAL MELEDRIO

1 hour 30 minutes

Places of interest: Ecomuseum and lime kiln Ancient Smithy Venetian Sawmill



LOCALITY: DIMARO FOLGARIDA

The walk starts at the playground near the Dimaro sports centre. After a short walk along the municipal road, take the slightly uphill dirt road which will take you to the wooden bridge over the Meledrio stream. Here take a detour and go along a flat path which will take you above the hamlet of Carciato. Then proceed along a slightly downhill road to the Carciato church and the hamlet of your walk at your starting point.

CARCIATO SENTIERO DELLA LEC

50 minutes

Places of interest: Meledrio stream



LOCALITY: DIMARO FOLGARIDA

From the service area of the cable car in Folgarida (1,300 m.), you can reach the well known locality of Malghet Aut (1,856 m.) using the cable car (as an alternative, you can walk along the forest road and then along the path - about 1 hour). Proceed along the dirt road to reach Mount Vigo (2,180 m.) in about 1 hour. From the adjacent Rifugio Orso Bruno you can finally reach the wonderful Malghete Lake (1,889 m.) going down the SAT 201 path; time required: about 30 minutes.

MALGHET AUT MONTE VIGO

2 hours 30 minutes

Places of interest: Panoramic viewpoints on the Brenta Dolomites



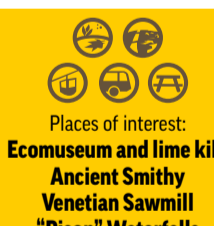
LOCALITY: DIMARO FOLGARIDA

Start your walk near the Hotel Belvedere in Folgarida (1,350 m.). From there, you can take the "Ronzoia" path on the left. Go downhill until you reach the so-called "Pont del Pastin" (1,213 m.). Proceed to the left, along the mysterious and luxuriant Val Meledrio valley, to reach the waterfalls of the Pison stream, and right after that the small shrine dedicated to the Virgin Mary. Proceed downhill along the Meledrio stream and enter into the Val Meledrio valley Ecomuseum, where you will be able to see an ancient lime kiln, an ancient smithy and the Venetian Sawmill. Proceed until you reach the town of Dimaro.

BELVEDERE DIMARO

1 hour 50 minutes

Places of interest: Ecomuseum and lime kiln Ancient Smithy Venetian Sawmill "Pison" Waterfalls



LOCALITY: DIMARO FOLGARIDA

The walk starts in the Folgarida square in front of the tourist information office and then immediately moves to a path which crosses through Val del Rotin until it reaches the Malghet di Almazzagò (mountain dairy), which is a magnificent panoramic viewpoint on Val di Sole. Go back along the same path.

FOLGARIDA MALGHET DI ALMAZZAGO

1 hour 30 minutes

Places of interest: Panoramic viewpoint over Val di Sole and the mountain dairies



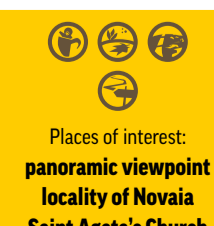
LOCALITY: COMMEZZADURA

Start your walk from the Piano car park. Go uphill along the road to Caprioli. As an alternative, you can take the fork, where you need to take the path to Deggiano. The path continues at this altitude until it reaches the high part of the hamlet of Mestragno, and then it crosses the fields and a bridge on a stream. Take the path to the locality of Novia, which offers a particularly spectacular panoramic view, and proceed along the dirt road until you cross the path that, on the left-hand side, goes uphill to Deggiano. Under the church, you will find the path which crosses the sunny fields, and will take you back to the hamlet of Mastelina. From here you can go back to Piano following the pedestrian sidewalk along the main street.

PIANO DEGGIANO

2 hours

Places of interest: panoramic viewpoint locality of Novia Saint Agata's Church



LOCALITY: COMMEZZADURA

From the square in front of the cable car departure, you can go uphill to the hamlet of Daolasa and reach the square with the fountain. Take the Strada all' Centrale on the right, which then becomes a path and crosses fields as well as the MTB competition tracks. Once you have reached the railway station of Piano, proceed uphill on the left on a dirt road in the woods until you reach the MTB 4X track where international competitions and world championships are held. From here you can follow the indications for the sensory path, which can be walked barefoot to be completely immersed in nature with all 5 of your senses in order to discover one of the most famous legends from the past.

DAOLASA SENSORY PATH

1 hour 30 minutes

Places of interest: Sensory Path MTB competition tracks



LOCALITY: COMMEZZADURA

The starting point for this walk is the Malga Panciana, which is located at the arrival area of the cable car Copai - Malga Panciana (1,882 m.). Here you can take the path, which has a medium difficulty climb, and which reaches a particularly magnificent panoramic viewpoint. From here you can proceed along a path which is quite flat or slightly uphill and which reaches the Rifugio Solander (in the locality of Alpe Daolasa) at an altitude of 2,045 m. The path then continues to the Malghete Lake, which can be reached by initially going down the ski slope and then along an easy path on the right.

THE SHEPHERDS' PATH

1 hour 30 minutes

Places of interest: Malghette Lake panoramic viewpoint



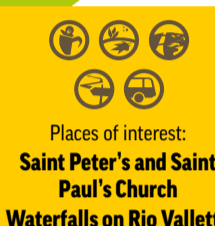
LOCALITY: MEZZANA

If you start your walk from Piazza Trento, where the Church dedicated to Saint Peter and Saint Paul as well as the shrine of the Caravaggio Madonna are located, you have to walk along Via Maturi for about 150 metres, and walk past the Rio Spona. Take the dirt road on the right, which will take you to Piazza della Novalina. From here you can take the "Piazzole" street and after 500 metres you have to proceed to the right to reach the waterfalls. Go back following the same route. Time required: 1 hour. It is also possible to return along a 2 and a half hour walk loop: walk the last few metres until you reach the detour for Menas and from there continue towards Castello. In the locality of Sastignana, take the downhill path which will take you to the locality of Ciaiano, then proceed along the state road SS42, crossing it using the underpass nearby. Take the forest road near the Pont de le Caore bridge and go back through the dirt road to the town of Mezzana.

FROM THE CHURCH TO THE WATERFALLS

1 hour

Places of interest: Saint Peter's and Saint Paul's Church Waterfalls on Rio Valletta



LOCALITY: MEZZANA

From the Sports Centre, take the road which runs alongside the soccer field towards Mas Brusà, and then proceed west on the dirt road towards Leganda delle Pulci. Follow the path which runs along the Rio Valusaia and at the fork, take the downhill dirt road which crosses the bicycle and pedestrian path between Pellizzano and Mezzana. Reach the Noce River and cross the "Pont de le Caore" bridge, and then proceed along the country road until you reach the town of Mezzana (Via Stabili - Playground).

PRESSENAC PATH

1 hour 30 minutes

Places of interest: Promescailò Multiport Centre



LOCALITY: MARILLEVA 900

Go past the departure area of the cable car in Folgarida (1,300 m.) and take the tiny (tarmacked) road on the right which goes uphill towards Residence Amba and Residence Gardene. Proceed to a service area. From here, moving to the right, you can reach the picnic area (1,000 m.).

GAGIOI

30 minutes

Places of interest: Promescailò Multiport Centre



LOCALITY: MARILLEVA 1400

Walk past the church in Marilleva 1400 and after about 150 meters you will be able to access the path from the turn. Cross the Ponte Basso bridge (1,441 m.) on the Rio Loreas, and you will find yourselves in a beautiful river-wood. You will find several benches and fixed tables along the path. Go back along the same route. You can also go back from the Ponte Alto bridge, which can be reached from the crossing with the path heading towards the Malghet Lakes. Proceed downhill towards the Residence Artuik in order to return to the church and then reach the Church (about 40 minutes).

ALBARÈ MADONNA DELLE CIME

1 hour

Places of interest: Panoramic viewpoints on the Brenta Dolomites



LOCALITY: PELLIZZANO

The path starts from the second hairpin turn of the tarmacked road which goes from Pellizzano to the well known locality of Fazzon (1,321 m.), which is better known as "Lago dei Caprioli" lake. Cross the wooden bridge on the Rio Fazzon, go uphill in the wood following the renown "Gnomes Path" and the directions to "Sentiero della Palù". The Lago dei Caprioli can also be reached by car with a toll car park in Fazzon. This is an easy walk around the lake which can also be done with a stroller.

CAPRIOLI LAKE

1 hour

Places of interest: Caprioli Lake



LOCALITY: PELLIZZANO

Reach Fazzon by car, near the Caprioli Lake - toll car park - and proceed towards the hamlet of Caprioli. As an alternative, you can walk along the "Gnomes Path" and the directions to "Sentiero della Palù" which starts from Pellizzano (see itinerary no. 23). Near the car park, take the SAT path no. 203. This is an easy path, which will take you up to the 1,546 metres of altitude of the Malga Alta (mountain dairy).

FAZZON MALGA ALTA

1 hour

Places of interest: Learning Farm (Activities have to be booked)



LOCALITY: PELLIZZANO

From the Malga di Fazzon (Visitors Centre ASUC Pellizzano, 1,279 m., near the Caprioli Lake), take the forest road on the right, cross the thick fir wood on the ridge of Mount Salvat, which separates the Valle di Fazzon from the Val Piana. Thus you will reach the fields of Valpiana (1,221 m.). From here you can reach Malga Valpiana (1,311 m.) in about 15 minutes. This mountain dairy provides restaurant service.

FAZZON VALPIANA

2 hours

Places of interest: Valpiana



LOCALITY: OSSANA

There are three possible paths which can take you to the Bosco Derniga. The Centro dei Carbonai: you can take it from the road to Valpiana. This is a flat path which can also be done by bike (MTB) and with strollers. Time required: 10 minutes. The Giardino dei Sensi: it starts from Piazza San Vigilio. The path crosses a field and then it enters a thick fir wood and finally ends crossing a peat bog. This path cannot be done by bike or with strollers. Time required: 20 minutes. The Passaggiata nel Tempo, among flowers: it starts from Piazza San Vigilio. There are 12 flowerbeds located along the forest road, which will help to guide visitors. This path can be done by bike or with strollers. Time required: 20 minutes. The three paths can be done so as to create a loop walk lasting about one hour. All paths are indicated with the required directions.

BOSCO DERNIGA

1 hour

Places of interest: Bosco Derniga (wood) that organizes workshops and activities (must be booked)



LOCALITY: OSSANA

The path starts near the first hairpin turn of the road which goes uphill towards the locality of Valpiana: you will cross a lovely and luxuriant fir wood and reach Valpiana in about 30 minutes. The locality of Valpiana (1,211 m.) can also be reached by car from the town of Ossana. Proceed on the forest road along the wide valley which runs along the Foce stream. Once you have reached Malga Valpiana, take the path which leads to the "Sas Pisador" Waterfalls and to the nearby climbing wall. At the fork with the path for the "Jack Canali" Bivouac, keep the left and go back towards Valpiana, thus ending an interesting loop itinerary.

VALPIANA "SAS PISADOR" WATERFALLS

2 hours

Places of interest: "Sas Pisador" Waterfalls



LOCALITY: VAL DI PEIO

Leave behind you the big car park at the Cogolo bus stop (1,165 m.), and proceed along the sidewalk on the main road SP87 towards Colledizzo for about 50 metres, then take the road on the right heading towards Piazza - this is a bicycle and pedestrian path. Take the path which goes uphill in the wood up to the romantic Saint Lucia's Church (1,196 m.) which is isolated on a hill outside the hamlet of Comasine, an ancient hamlet which used to be inhabited by miners. Go back using the same route. Time required: 2 hours. As an alternative, walk downhill to Comasine, 1 km on the main road SP87, and right before the bridge take the bicycle and pedestrian path. Walk until the end of the path, in Piazza.

COGOLO SAINT LUCIA'S CHURCH

2 hours 30 minutes

Places of interest: Saint Lucia's Church



LOCALITY: VAL DI PEIO

Start your walk from the car park near the ancient Pignia Church, which can be reached from Cogolo (1,5 km from the centre). Take the road which goes to Malga Mare, then proceed to the historical Pont Hydroelectric Power Plant (1,170 m.). Cross the bridge on the Noce River in order to proceed on the tarmacked road up to the fork to the Masi delle Lame. Take the forest road up to the bridge in Fratta Piana (1,386 m.) and go back from the path which goes down the other side of the stream. Reach the bridge in the locality of Polveriera, remain on the left side of the mountain, walk past the Masi di Gulnova and go back to Pont. You will see many typical masi along the path.

COGOLO GIRO DEI MASI

2 hours

Places of interest: Selvio National Park



LOCALITY: VAL DI PEIO

Start your walk near the service area of the cable car in Peio Fonti. Take the road on the right, and after about 50 metres, take the path on the left which will lead you to the "Wildlife Area" in 10 minutes. This area can be visited - you will be able to see deer and roe deer in semi-freedom, and you will also be able to visit the visitor centre of the Selvio National Park. From here you can take the path which runs alongside the outer fence of the Wildlife Area. Then you will have to walk along the tarmacked road on the left. This will take you to the Pian Palù Lake. After about 1 km, you will reach the car park of the Malga Frattasacca (1,523 m.). Proceed by foot, and after about 100 metres take the SAT path no. 110 on the left which goes downhill towards the valley floor and then goes up again to the Forte Barba di Fior (1,510 m.), the Austrian-Hungarian defensive fort dating back to the First World War. You can proceed along the same path up to the hamlet of Fontanino (1,680 m.), which can be reached in about 45 minutes, and from here, with another 20 minutes walk, you can reach the Pian Palù Lake (m. 1,800), a well-known artificial lake which gathers the waters of the higher part of the Noce River.

WILDLIFE AREA PEIO PAESE

1 hour 30 minutes

Places of interest: Wildlife Area White War Museum traditional cheese dairy



LOCALITY: VAL DI PEIO

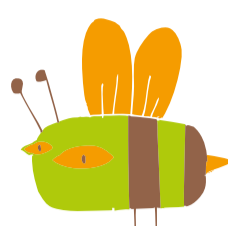
**BAITA VELON
Loc. VISCLE**

Walk past the Hotel Baita Velon (1,348 m), and take the road on the right following the indication "passaggiata delle Viscle" (1,432 m). You will walk along the stream and then reach a picnic area with a fresh water stream. Turn right and cross the bridge, then immediately take the road on the left to get to "pradi del Pecé". Walk along the grazing land and reach the Malga Pecé (mountain dairy - 1,503 m). You can go back from the forest road keeping on the left side of the stream and thus completing the loop path. You can park your car at the Hotel Baita Velon.

2 hours

NO

Places of interest:
Malga Pecé



**PRESENA
GLACIER**

From Passo del Tonale (1,882 m), go to Passo Paradiso with the Paradiso cable car. There you will be able to visit the "Galleria Paradiso", a long cave dug in granite which was used as a shelter for soldiers. The Galleria hosts a multimedia experience called "Sounds and Voices of the White War", and a display of war remains and information on living conditions and facts related to soldiers on the glacier front. The sound experience is suggestive and touching, as it unites uneven and muffled sounds and noises as they are likely to have been perceived by the soldiers hiding in this tunnel. Once you have visited the tunnel, you can take the dirt road which goes uphill from the arrival point of the cable car to the Fraternity Monument, which was designed to remember the fallen of the First World War. Proceed along

the Monticello Lake until you arrive to Rifugio Capanna Presena (2,738 m), which has been completely renovated. From here you can reach Passo Presena with the Presena cable car. It is located at an altitude of 3,000 meters, and you will have a great panoramic view of surrounding mountain tops.

45 minutes

NO

Places of interest:
**Galleria Paradiso
War Memorial
panoramic viewpoint**

**Loc. RASEGHE
TONALE BEACH**

Drive uphill from Vermiglio, and, after about 8 km, leave your car in the car park of the picnic area on the left of the main road SS42, after the roadmender's house. Passo Tonale is about 2 km away. Take the only path available, and after a few meters, you will see the indication for the locality "Raseghe" (1,750 m). This is a wide meadow basin with picnic equipment and grills. Proceed along the dirt road and take the first path you see on the right to reach the so-called "Tonale Beach" (1,650 m), a sandy area which was created by the erosion of the stream which starts from the Presena riverbed and crosses the area creating small but pretty lakes. If you cross the several bridges available, you will reach the "Bait de Cacciatori". Go back using the same route.

1 hour
45 minutes

NO

Places of interest:
Tonale Beach



Walkable with a stroller
Walkable with a child backpack carrier
Walkable in off season periods
Tarmacked and/or dirt road
Path
Possibility of going up and/or down with cable car or chair lift
Possibility of returning using public transportation
Picnic area
Playground
Castle
Snack bar or restaurant
Fountain

**FITNESS TRAIL
PEATBOG**

This is an easy-access path which starts from behind the caravan area "Paradiso" in Passo del Tonale (1,883 m). Go back using the same route. It can be walked with a stroller. Time required: 1 hour and 20 minutes. For a loop path, which cannot be done with a stroller, once you arrive at the end of the "fitness trail", follow the dirt road downhill until you reach the purification plant, which is located after the bridge on the Vermigliana stream. When you reach the purification plant, take a shortcut along the fields towards Tonale until you reach the peatbog information point, and then again, cross the small bridges, until the last of the three apartment buildings.

1 hour
30 minutes

PARTIALLY

Places of interest:
**peatbog
information point**

**SENTIERO
DELLE MARMOTTE**

In order to reach the San Bartolomeo Ospizio (lodging - 1,971 m) from the centre of Passo Tonale (1,883 m), you should take the path which runs along the ticket office of Adamello Ski or, as an alternative, you should take the tarmacked road next to the car park of the Valbiolo cable car. Time required: 30 minutes. Proceed along the dirt road, which cannot be walked with a stroller, until you reach the Restaurant Valbiolo (2,244 m). As an alternative, you can take the SAT path no. 111, which is located on the left-hand side of the Hotel La Mirandola, and then follow the indications for Malga Valbiolo. The panoramic path runs through prairies full of mountain vegetation and groundhog burrows. The restaurant can also be reached with the Valbiolo cable car which is open from the beginning of July until the beginning of September. Near the arrival area of the Valbiolo cable car, there is the Villaggio delle Marmotte, which is an educational playground with wooden toys and various equipment for children.

45 minutes
2 hours and
30 minutes
without
cable car

PARTIALLY

Places of interest:
panoramic viewpoint

**FORTE MERO
STRINO BARRACKS**

From the car park of the historical Ospizio San Bartolomeo (lodging - 1,971 m), follow the dirt road in a north-east direction. When you reach the big turn, follow the dirt road on the right which goes along the Tonale plateau. This is a highly panoramic area rich in mountain flora. Proceed until you reach the Fort Mero (1,840 m), a former Austrian-Hungarian fort which was built between the years 1911 and 1913. Here you will find a picnic area. From Fort Mero, you can proceed to the fork, where you will find remains of an Austrian-Hungarian military village, which at the time was made up of barracks, warehouses and a field hospital. This area is called "Caserma di Strino", recently restored. A picnic area is available here. Go back using the same route.

1 hour
45 minutes

NO

Places of interest:
**Fort Mero
Strino Barracks**

**TONALE PEATBOG
BIOTOPE**

The walk starts at the tiny path after "Torre Presena", the third light blue/grey apartment building at the end of Via San Bartolomeo, and it runs along the lower part of the Tonale basin downstream from the main road. This area has numerous different micro-environmental zones which vary from almost dry areas to tiny lakes, fast running waters and still waters. Plant life is highly complex and rich. Once you have reached the main road, walk along it for a few meters towards Vermiglio. When you are near the picnic area and car park area, cross it to reach the path which will take you uphill from the main street. Continue along this path until you reach the Tonale mountain airfield, cross it towards the Ospizio San Bartolomeo (lodging), which you can see above, and continue until the tarmacked road which will take you back to Passo del Tonale.

2 hours

NO

Places of interest:
**Protected Area
(peatbog)**

